

# iPhoto: Sharing libraries among multiple users

Learn how to share a single iPhoto library for editing among multiple users.

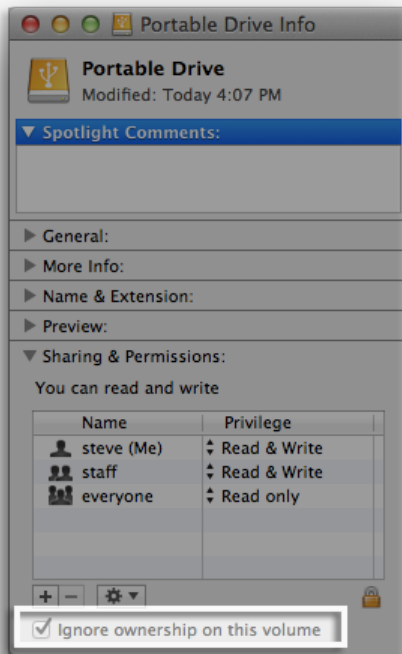
**Important:** If two or more users attempt to use the same iPhoto library and the library is not on a volume where permissions are ignored, unexpected results may occur. This includes the inability to see or edit certain photos, or the inability to open the iPhoto library. Follow the steps below to ensure each user has read/write access to the iPhoto Library.

As a precaution, you should make a backup of your iPhoto library before following these steps.

To share your iPhoto library, you need to move the iPhoto library to a volume where permissions are ignored.

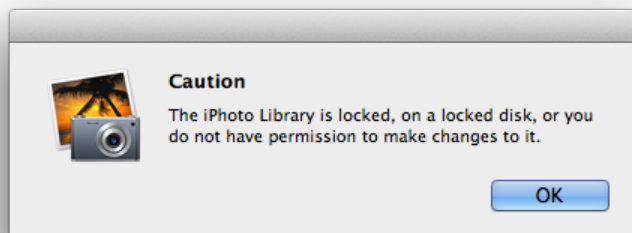
## Move the iPhoto library to an external drive

1. Connect an external USB, FireWire, or Thunderbolt drive which has enough free space to contain the library.
2. Select this drive in the Finder.
3. Choose File > Get Info.
4. In the Info window, find the Sharing & Permissions section. You may need to click the disclosure triangle to see the details for this section.
5. Click the lock in the lower-right corner of the Info window. Enter an administrator name and password when prompted.
6. Select the option to Ignore Permissions on this volume (usually selected by default).
7. Copy your iPhoto library to this drive.



**Important:** If you've selected this volume for use as a Time Machine backup, you will not be able to select the option to ignore permissions on the same volume. Select a different volume for the destination of your shared iPhoto library.

Keep in mind that while one user is viewing this library from iPhoto, another user will not be able to open this library at the same time. Instead, the following alert message appears indicating that the library is already in use. You'll need to quit iPhoto from the other user account before the next user will be able to view or edit this library.



## Learn more

If you're experiencing a permissions issue with your iPhoto library, you may be able to resolve the issue by following the instructions in [this article](#).

It's recommended that you store your iPhoto library on a locally mounted hard drive. Storing your iPhoto library on a network share can lead to poor performance, data corruption, or data loss. If you use both iPhoto and Aperture with the same library, using a Mac OS X Extended formatted volume is recommended. For more information, see [Aperture: Use locally mounted Mac OS X Extended volumes for your Aperture library](#).

Last Modified: May 6, 2016

Helpful?

Yes

No

12% of people found this helpful.

## Additional Product Support Information



iPhoto

### Start a Discussion

in Apple Support Communities

Ask other users about this article

[Submit my question to the community](#)

[See all questions on this article >](#) [See all questions I have asked >](#)

## Contact Apple Support

Need more help? Save time by starting your support request online and we'll connect you to an expert.

[Get started >](#)



[Apple](#) > [Support](#) > [iPhoto: Sharing libraries among multiple users](#)

More ways to shop: Visit an [Apple Store](#), call 1-800-MY-APPLE, or [find a reseller](#).

Copyright © 2016 Apple Inc. All rights reserved. [Privacy Policy](#) | [Terms of Use](#) | [Sales and Refunds](#) | [Site Map](#) | [Contact Apple](#)

[United States \(English\) >](#)